

HITEX COLLARS

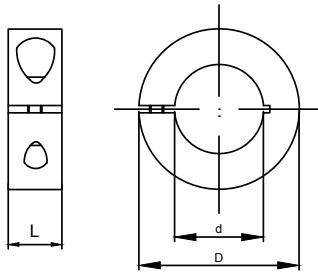


HCC CLAMP COLLARS

HITEX
POWER TRANSMISSION COMPONENTS



CLAMP COLLARS

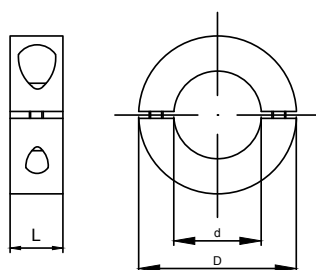


Specifications

- Bore range 3 – 50
- Does not damage the shaft
- Available in blackened steel C45 and stainless steel 1.4301

HCC single-split style

Size	Dimensions (mm)			Clamping screw DIN 912		Weight m(g)
	d	D	L	M	T _A (Nm)	
3	3	16	9	M3 x 8	2.1	11
4	4	16	9	M3 x 8	2.1	11
5	5	16	9	M3 x 8	2.1	10
6	6	16	9	M3 x 8	2.1	10
7	7	18	9	M3 x 8	2.1	13
8	8	18	9	M3 x 8	2.1	12
9	9	24	9	M3 x 10	2.1	23
10	10	24	9	M3 x 10	2.1	22
11	11	28	11	M4 x 12	4.6	39
12	12	28	11	M4 x 12	4.6	38
13	13	30	11	M4 x 14	4.6	43
14	14	30	11	M4 x 14	4.6	42
15	15	34	13	M5 x 16	9.5	65
16	16	34	13	M5 x 16	9.5	63
17	17	36	13	M5 x 16	9.5	72
18	18	36	13	M5 x 16	9.5	69
19	19	40	15	M6 x 16	16	100
20	20	40	15	M6 x 16	16	97
21	21	42	15	M6 x 16	16	107
22	22	42	15	M6 x 16	16	103
23	23	45	15	M6 x 16	16	122
24	24	45	15	M6 x 16	16	117
25	25	45	15	M6 x 16	16	114
26	26	48	15	M6 x 16	16	133
28	28	48	15	M6 x 16	16	123
30	30	54	15	M6 x 18	16	163
32	32	54	15	M6 x 18	16	156
34	34	57	15	M6 x 18	16	174
35	35	57	15	M6 x 18	16	171
36	36	57	15	M6 x 18	16	163
38	38	60	15	M6 x 18	16	178
40	40	60	15	M6 x 18	16	163
42	42	73	19	M8 x 25	39	367
45	45	73	19	M8 x 25	39	344
48	48	78	19	M8 x 25	39	392
50	50	78	19	M8 x 25	39	370



Specifications

- Bore range 3 – 50
- Two-pieced for easier installation
- Does not damage the shaft
- Available in blackened steel C45 and stainless steel 1.4301

HCC double-split style

Size	Dimensions (mm)			Clamping screw DIN 912		Weight
	d	D	L	M	T _A (Nm)	m (g)
3	3	16	9	M3 x 8	2.1	11
4	4	16	9	M3 x 8	2.1	11
5	5	16	9	M3 x 8	2.1	11
6	6	16	9	M3 x 8	2.1	10
7	7	18	9	M3 x 8	2.1	13
8	8	18	9	M3 x 8	2.1	12
9	9	24	9	M3 x 10	2.1	25
10	10	24	9	M3 x 10	2.1	24
11	11	28	11	M4 x 12	4.6	40
12	12	28	11	M4 x 12	4.6	39
13	13	30	11	M4 x 14	4.6	45
14	14	30	11	M4 x 14	4.6	43
15	15	34	13	M5 x 16	9.5	68
16	16	34	13	M5 x 16	9.5	65
17	17	36	13	M5 x 16	9.5	74
18	18	36	13	M5 x 16	9.5	71
19	19	40	15	M6 x 16	16	104
20	20	40	15	M6 x 16	16	101
21	21	42	15	M6 x 16	16	113
22	22	42	15	M6 x 16	16	107
23	23	45	15	M6 x 16	16	127
24	24	45	15	M6 x 16	16	122
25	25	45	15	M6 x 16	16	120
26	26	48	15	M6 x 16	16	139
28	28	48	15	M6 x 16	16	128
30	30	54	15	M6 x 18	16	171
32	32	54	15	M6 x 18	16	161
34	34	57	15	M6 x 18	16	181
35	35	57	15	M6 x 18	16	172
36	36	57	15	M6 x 18	16	169
38	38	60	15	M6 x 18	16	183
40	40	60	15	M6 x 18	16	172
42	42	73	19	M8 x 25	39	383
45	45	73	19	M8 x 25	39	360
48	48	78	19	M8 x 25	39	414
50	50	78	19	M8 x 25	39	386

PRODUCT GROUPS



Couplings



Locking Assemblies



Universal Joints



Clutches & Brakes



Brakes



Collars

Skilled to get your ideas fulfilled

HITEX is a range of power transmission components dedicated to add value to all OEM industrial creations.

HITEX is produced using the latest technology & rich experience of its factories to provide innovative and cost-effective engineered solutions.

Honored to have the opportunity to serve OEM customers worldwide, HITEX provides prompt and reliable deliveries to meet all aftersales requirements.

Our best technology is human

**European
Transmission
Company**

The **Powerful** Solution

European Transmission Company B.V.
Laan van de Ram 49
7324 BW Apeldoorn
The Netherlands
Tel. +31 (0)881 200 300
info@europeantransmissioncompany.eu
www.europeantransmissioncompany.eu

HITEX
POWER TRANSMISSION COMPONENTS

Images may differ from reality. All content (logo, text, data, graphics, and images) may not be reproduced, copied, transmitted or manipulated without the prior written permission of the AZ Hollink Group. All content (text, diagrams and pictures) is subject to alteration. We accept no liability.

www.hitex.nl