

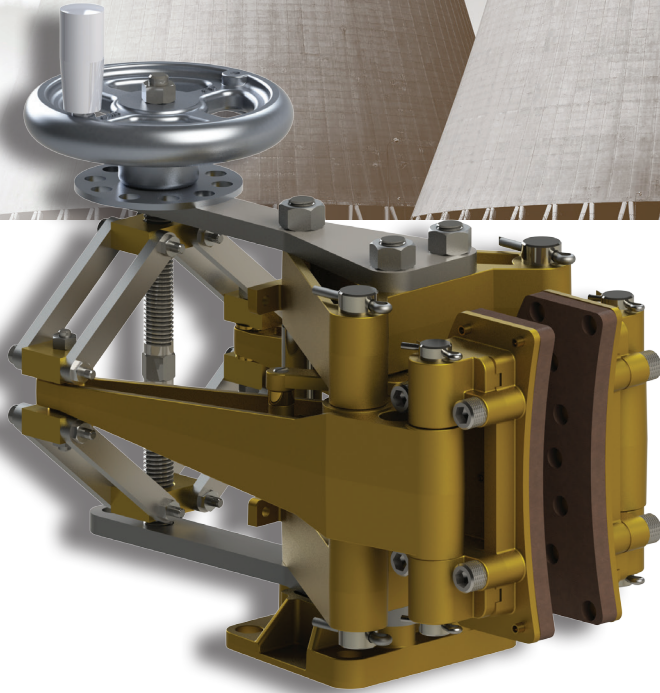
# 5020-M | MANUALLY APPLIED CALIPER DISC BRAKE



## KEY BENEFITS

Bronze & stainless steel construction

Safe & secure locking of large fans during maintenance



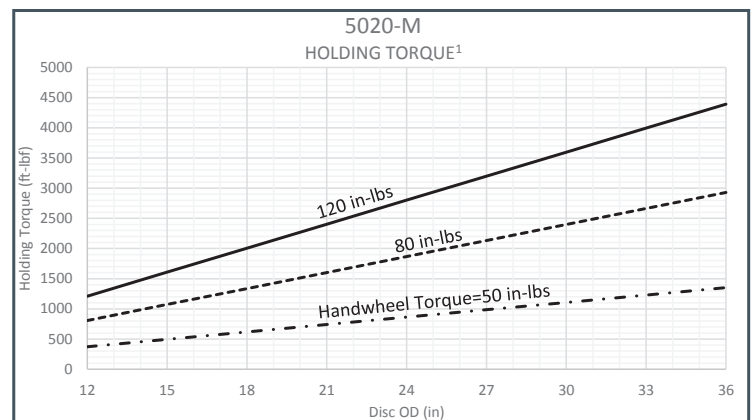
## Keeping you secure.

Kobelt's manually applied disc brakes are the ideal brake for providing safe and secure locking of large fans during maintenance operations. They are also well suited for tensioning applications on cable reels and more.

For over three decades we have been manufacturing our disc brakes out of bronze and stainless steel. This means that Kobelt's brakes are built to last in the harshest conditions.

## SPECIFICATIONS

<b>Normal Force<sup>1</sup>:</b>	<b>0 ...4550 lbs</b>	<b>[20.2 KN]</b>
<b>Temperature Range:</b>	<b>-55°F...+120°F</b>	<b>-48°C...+49°C</b>
<b>Disc Thickness:</b>	<b>1¼ in</b>	<b>[32 mm]</b>
<b>Minimum Disc Diameter:</b>	<b>12 in</b>	<b>[229 mm]</b>
<b>Maximum Disc Diameter :</b>	<b>unlimited<sup>2</sup></b>	
<b>Weight:</b>	<b>33 lbs</b>	<b>[14.8 kg]</b>

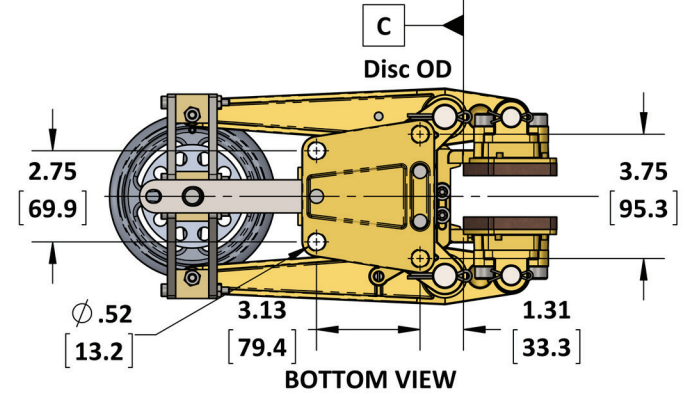
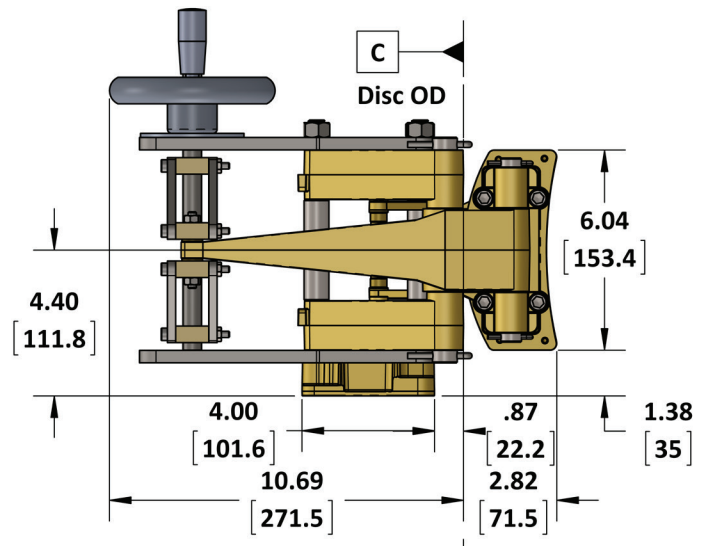
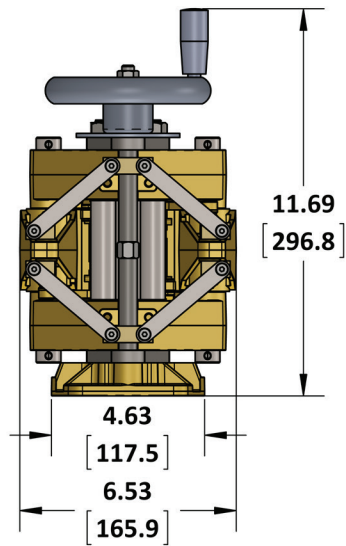


<sup>1</sup> Values in this chart are theoretical and for reference only. They are based on properly bedded and burnished linings acting on a rotor at 20°C and manufactured to required specifications.

<sup>2</sup> Requires a minimum 2.80 in [71 mm] wide face

# SPECIFICATIONS

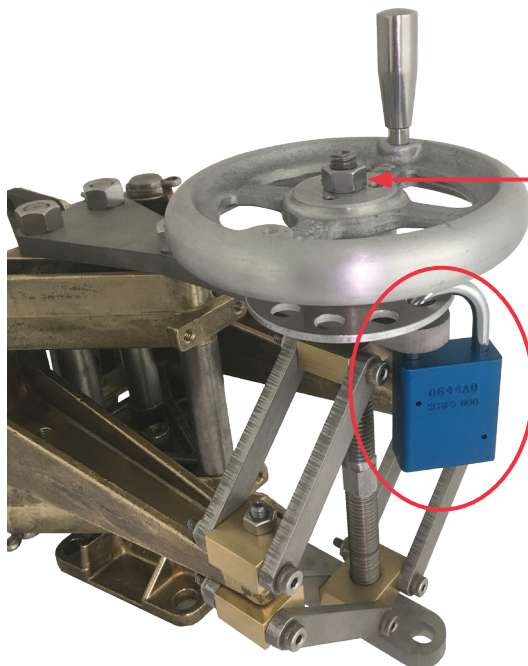
## FOOT MOUNTED VERSION



5020-M  -

Disc thickness  
 (blank) = 1.250 in  
 100 = 1.000 in  
 075 = 0.750 in  
 050 = 0.500 in

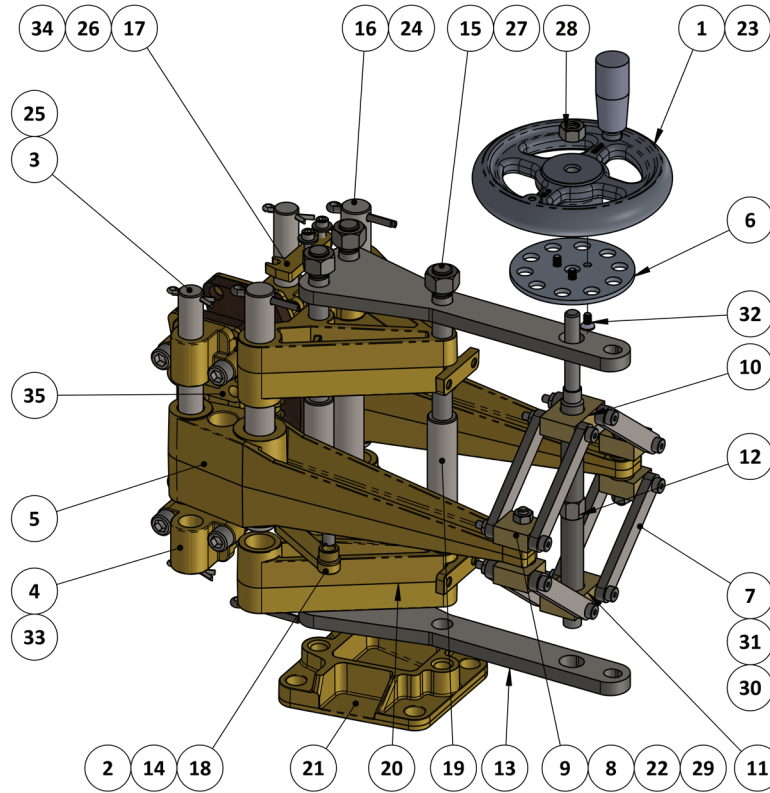
Mounting code  
 (blank) = foot mounted  
 W = side mounted



Hexagon for torque wrench setting of holding torque

Provision for secure lockout

# PARTS LISTING



ITEM	QTY.	PART NUMBER	5020-M DESCRIPTION
1	1	9899-0046-01	HAND WHEEL, 5", ALUMINUM, MODIFIED
2	2	5021-0126	LINK PIN, LONG, 5020 CALIPER
3	2	5021-0021	SHOE PIN, 5021 CALIPER
4	4	5021-0006	PIVOT BLOCK, 5021 CALIPER
5	2	5021-0004	LEVER, 5021 CALIPER
6	1	5020-0046	LOCKOUT PLATE, 5020 HAND WHEEL BRAKE
7	8	5020-0045	LINK, 5020 HAND WHEEL BRAKE
8	2	5020-0044	PIN, REACTION BLOCK, 5020 HAND WHEEL BRAKE
9	4	5020-0043	REACTION BLOCK, 5020 HAND WHEEL BRAKE
10	1	5020-0042-L	BLOCK, TRAVELING, LEFT HAND THREAD
11	1	5020-0042	BLOCK, TRAVELING, 5020 HAND WHEEL BRAKE
12	1	5020-0041	ROD, TURNBUCKLE, 5020 HAND WHEEL BRAKE
13	2	5020-0040	BRACKET, 5020 HAND WHEEL BRAKE
14	2	5020-0027	SPACER, 5020 CALIPER
15	3	5020-0023-W	TIE ROD, 5020 SIDE MOUNT CALIPER
16	2	5020-0022	SADDLE PIN, 5020 CALIPER
17	2	5020-0012	BALANCING LINK NO. 2, 5020 CALIPER
18	2	5020-0011	BALANCING LINK NO.1, 5020 CALIPER

ITEM	QTY.	PART NUMBER	5020-M DESCRIPTION
19	3	5020-0003	SPACER, 5020 CALIPER
20	2	5020-0002	SADDLE, 5020 CALIPER
21	1	5020-0001	BASE, 5020 CALIPER
22	4	1302-0210	THRUST BEARING, 1/4", OIL-EMBEDDED
23	1	1051-0001	HANDLE, SQUARE, REVOLVING, 1/4-20 UNC, SS
24	4	1026-0824	COTTER PIN, 3/16 X 1 1/2
25	4	1026-0516	COTTER PIN, 1/8" X 1", SS
26	4	1023-0108	WASHER, FLAT, #10, TYPE A, SS
27	3	1022-0114	HEX NUT, 1/2 UNC, GR 18-8
28	1	1022-0112	HEX NUT 3/8-16 UNC, GR. 18-8
29	4	1022-0110	NUT, HEX, 1/4-20 UNC, SS
30	8	1022-0108	NUT, HEX, #10-24, GR 18-8
31	8	1019-0424	SHOULDER BOLT, 1/4 X 1-1/2, #10-24 UNC, GR 18-8
32	3	1015-0806	SCREW, CAP, FLAT HD, SKT, #10-24 X 3/8, GR 18-8
33	8	1002-1220	SCREW, SKT HD, 3/8-16 UNC X 1-1/4, SS
34	4	1002-0808	SCREW, SKT HD CAP, #10-24 UNC x 1/2 LG, SS
35	2	5020-LS	SHOE ASSEMBLY, 3/8" K5

Note: Product information and specifications are subject to change without prior notification.