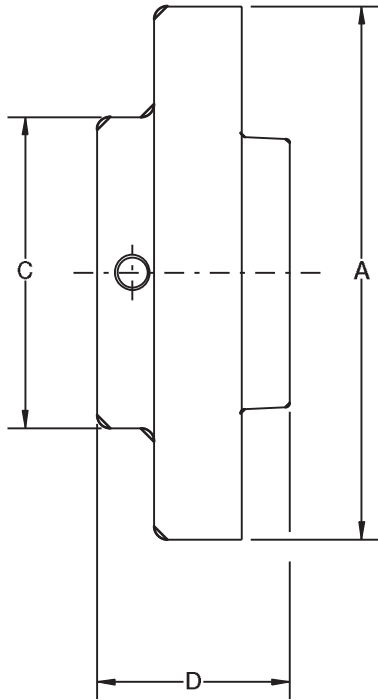
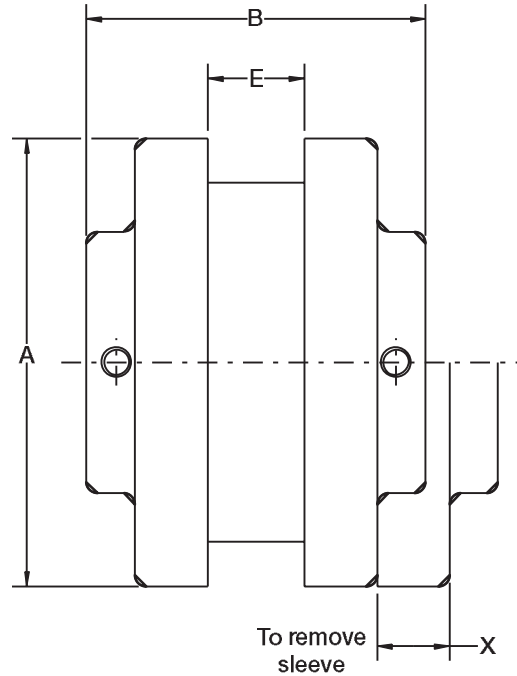


# Ratings/dimensions

## Dodge® D-Flex Type S couplings



Type "S" flange



Type "S" coupling

### D-Flex Type S couplings\*\*

Coupling size	Min. bore (mm)	Max. bore (mm)	EPDM and neoprene		Hytrel		Max. RPM	A (mm)	B (mm)	C (mm)	D (mm)	E (mm)	X (mm)	Mass (Kg)	Inertia <sup>(1)</sup> (Kg-m <sup>2</sup> )
			kW / 100	Torque (N-m)	kW / 100	Torque (N-m)									
5S	13	32*	0.28	27	—	—	7,600	83	71	48	34	19	25	0.5	0.0008
6S	13	40*	0.53	51	2.16	203	6,000	102	89	71	41	22	28	0.9	0.003
7S	13	48*	0.9	82	3.43	325	5,250	118	100	71	47	25	33	1.2	0.005
8S	13	60*	1.34	128	5.37	512	4,500	138	113	83	53	29	38	2	0.01
9S	23	68*	2.09	203	8.51	814	3,750	161	129	92	61	37	44	2.9	0.02
10S	28	80*	3.43	325	13.43	1,282	3,600	191	145	111	69	41	51	4.8	0.05
11S	30	96*	5.37	512	21.34	2,034	3,600	219	181	143	87	48	60	8.2	0.10
12S	38	108*	8.5	814	37.31	3,559	2,800	254	210	146	102	59	68	12.6	0.19
13S	51	114*	13.43	1,282	55.97	5,341	2,400	299	235	171	111	68	78	20.5	0.42
14S	51	127*	21.34	2,034	85.82	8,190	2,200	353	251	191	114	83	89	31.3	0.93
16S	51	152*	55.95	5,339	—	—	1,500	480	362	203	152	121	108	56.8	3.85

\* Max bores with metric shallow keys. Metric shallow keys have standard height less 1mm.

\*\* Includes metric setscrews

(1) Inertia values are for complete coupling with rough stock bore and split EPDM element.

# Part numbers

## Dodge® D-Flex Type S couplings

Complete D-Flex Type S coupling consists of: one sleeve and two flanges

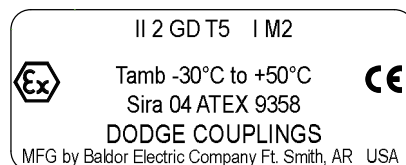
### D-Flex Type S coupling flanges

Bore (mm)	Coupling size										
	5S	6S	7S	8S	9S	10S	11S	12S	13S	14S	16S
Reborable	004976	004977	004978	004979	004980	004981	004982	004983	004993	004994	004995
14	004856	004865	004878	004893	—	—	—	—	—	—	—
16	004857	004866	004879	004894	—	—	—	—	—	—	—
18	004858	004867	004880	004895	—	—	—	—	—	—	—
19	004859	004868	004881	004896	—	—	—	—	—	—	—
20	004860	004869	004882	004897	—	—	—	—	—	—	—
22	004861	004870	004883	004898	004916	—	—	—	—	—	—
24	004862	004871	004884	004899	004917	—	—	—	—	—	—
25	004863	004872	004885	004900	004918	—	—	—	—	—	—
28	004864	004873	004886	004901	004919	004928	—	—	—	—	—
30	004193	004874	004887	004902	004920	004929	004942	—	—	—	—
32	—	004875	004888	004903	004921	004930	004943	—	—	—	—
35	—	004876	004889	004904	004922	004931	004944	—	—	—	—
38	—	394350	004890	004905	004923	004932	004945	004960	—	—	—
40	—	—	004891	004906	004924	004933	004946	004961	—	—	—
42	—	—	004892	004907	004925	004934	004947	004962	—	—	—
45	—	—	005006	004908	004926	004935	004948	004963	—	—	—
48	—	—	005007	004909	004927	004936	004949	004964	—	—	—
50	—	—	—	004910	004181	004937	004950	004965	—	—	—
55	—	—	—	005008	004182	004938	004951	004966	—	—	—
60	—	—	—	395371	005009	004939	004952	004967	—	—	—
65	—	—	—	—	395373	004940	004953	004968	004177	—	—
70	—	—	—	—	—	004941	004954	004969	—	—	—
75	—	—	—	—	—	395372	004955	004970	004178	—	—
80	—	—	—	—	—	395374	004956	004971	004180	004179	004757
85	—	—	—	—	—	—	004957	004972	—	—	—
90	—	—	—	—	—	—	004958	004973	—	—	—
95	—	—	—	—	—	—	004959	004974	—	—	—
100	—	—	—	—	—	—	—	004975	—	—	—

Unless otherwise specified, all D-Flex flanges are clearance fit per ISO R775. See page 51 for additional details.

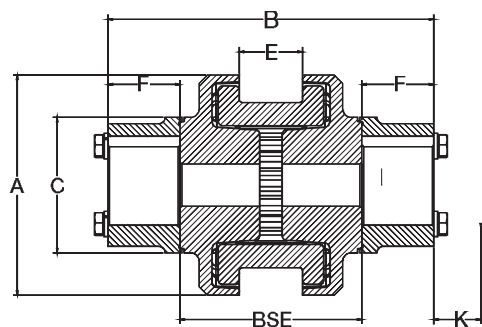
### D-Flex coupling sleeves

Coupling size	EPDM			Neoprene			Hytrek	
	JE	JES	E	JN	JNS	N	H	HS
Element construction	One-piece solid	One-piece split	Two-piece	One-piece solid	One-piece split	Two-piece	One-piece solid	Two-piece
5	004212	004246	022191	004213	004247	022212	—	—
6	004214	004248	022192	004215	004249	022213	022183	022232
7	004216	004250	022193	004217	004251	022214	022184	022233
8	004218	004252	022194	004219	004253	022215	022185	022234
9	004220	004254	022195	—	—	022216	022186	022235
10	004222	004256	022196	—	—	022217	022187	022236
11	—	—	022197	—	—	022218	022188	022237
12	—	—	022198	—	—	022219	022189	022238
13	—	—	021990	—	—	021993	—	022239
14	—	—	021991	—	—	021994	—	425730
16	—	—	021992	—	—	—	—	—

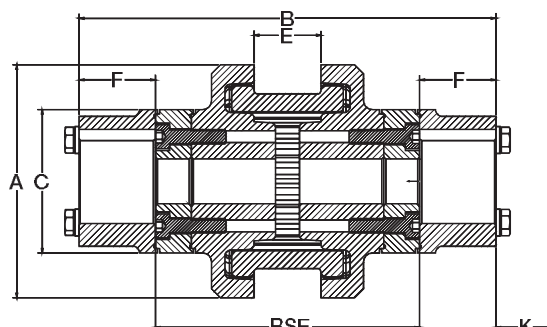


# Ratings/dimensions

## Dodge® D-Flex Type SC couplings



Type 1



Type 2

### D-Flex Type SC couplings

Coupling size	BSE	Flange number	Spacer type	Min. bore (mm)	Max. bore (mm)	A (mm)	B (mm)	C (mm)	E (mm)	F (mm)	K (mm)	Inertia <sup>(2)</sup> (kg-m <sup>2</sup> )	Mass <sup>(3)</sup> (kg)	
5SC	100	5SC - 100MM	Type 2	13	30	83	154	51	19	28	13	0.001	1.97	
	140	5SC - 140MM	Type 2	13	30	83	194	51	19	28	13	0.001	2.47	
6SC	100	6SC - 100MM	Type 2	16	38	102	160	64	22	31	15	0.003	3.59	
	140	6SC - 140MM	Type 2	16	38	102	200	64	22	31	15	0.004	4.53	
	180	6SC - 180MM	Type 2	16	38	102	240	64	22	31	15	0.005	5.56	
	250	6SC - 250MM	Type 2	16	38	102	310	64	22	31	15	0.006	7.37	
7SC	100	7SC - 100MM	Type 1	16	44	118	172	71	25	37	18	0.005	4.34	
	140	7SC - 140MM	Type 2	16	44	118	212	71	25	37	18	0.005	5.25	
	180	7SC - 180MM	Type 2	16	44	118	252	71	25	37	18	0.006	6.27	
7SC	250	7SC - 250MM	Type 2	16	44	118	322	71	25	37	18	0.007	8.04	
	8SC	100	8SC - 100MM	Type 1	20	50	138	186	83	29	44	22	0.01	6.07
		140	8SC - 140MM	Type 2	20	50	138	226	83	29	44	22	0.01	7.74
180		8SC - 180MM	Type 2	20	50	138	266	83	29	44	22	0.01	9.1	
250		8SC - 250MM	Type 2	20	50	138	336	83	29	44	22	0.01	11.46	
8SC-10	3.5	8SC35 - 10	Type 1	29	62	138	208	111	37	59	93	0.02	10.6	
	5	8SC50 - 10	Type 2	29	62	138	246	111	37	59	93	0.02	13.4	
9SC	100	9SC - 100MM	Type 1	23	54	161	198	92	37	50	26	0.02	9.13	
	140	9SC - 140MM	Type 1	23	54	161	238	92	37	50	26	0.02	11.51	
	180	9SC - 180MM	Type 2	23	54	161	278	92	37	50	26	0.02	12.14	
	250	9SC - 250MM	Type 2	23	54	161	348	92	37	50	26	0.03	15.01	
9SC-11	5	9SC70 - 11	Type 2	29	73	161	265	133	37	69	92	0.04	19.2	
	7	9SC70 - 11	Type 2	29	73	161	316	133	37	69	92	0.04	23.5	
	7.75	9SC78 - 11	Type 2	29	73	161	334	133	37	69	93	0.04	25.1	
10SC	140	10SC - 140MM	Type 1	29	62	191	256	111	41	59	31	0.05	16.5	
	180	10SC - 180MM	Type 2	29	62	191	296	111	41	59	31	0.05	18.34	
	250	10SC - 250MM	Type 2	29	62	191	366	111	41	59	31	0.06	22.49	
10SC-13	7	10SC70 - 13	Type 2	35	86	191	345	160	41	84	126	0.08	34.3	
	7.75	10SC78 - 13	Type 2	35	86	191	364	160	41	84	126	0.08	36.6	
	10	10SC100 - 13	Type 2	35	86	191	422	160	41	84	126	0.08	44	
11SC	140	11SC - 140MM	Type 1	29	73	219	276	133	48	69	32	0.10	25.74	
	180	11SC - 180MM	Type 1	29	73	219	316	133	48	69	32	0.11	30.06	
	250	11SC - 250MM	Type 2	29	73	219	386	133	48	69	32	0.12	35.34	
11SC-14	7	11SC70 - 14	Type 2	42	98	219	373	165	48	98	138	0.13	47.1	
	7.75	11SC78 - 14	Type 2	42	98	219	392	165	48	98	138	0.14	49.6	
	10	11SC100 - 14	Type 2	42	98	219	450	165	48	98	138	0.14	57.1	
12SC	180	12SC - 180MM	Type 1	48	73	254	328	146	59	75	45	0.2	38.38	
	250	12SC - 250MM	Type 2	48	73	254	398	146	59	75	45	0.22	45.81	
12SC-14	7	12SC70 - 14	Type 1	42	98	254	373	165	59	98	138	0.23	54.2	
	7.75	12SC78 - 14	Type 2	42	98	254	392	165	59	98	138	0.23	56.7	
	10	12SC100 - 14	Type 2	42	98	254	450	165	59	98	138	0.23	64.2	
13SC	180	13SC - 180MM	Type 1	35	86	299	348	156	68	85	46	0.43	54.66	
	250	13SC - 250MM	Type 2	35	86	299	418	156	68	85	46	0.43	57.8	

(1) Maximum speed for Type SC is the same as Type S

(2) Inertia is for the complete coupling with rough stock bore and fully split EPDM element

(3) Weight is for the complete coupling with rough stock bore and fully split EPDM element

# Part numbers

## Dodge® D-Flex Type SC couplings

### D-Flex Type SC coupling spacer flanges

BSE distance (mm)	Pump standard	Coupling size														
		5SC	6SC	7SC	8SC	8SC-10	9SC	9SC-11	10SC	10SC-13	11SC	11SC-14	12SC	12SC-14	13SC	14SC
89	ANSI	022000	022001	022004	022007	022775	022010	—	—	—	—	—	—	—	—	—
100	ISO	022424 <sup>(2)</sup>	022422	022826 <sup>(1)</sup>	022830	—	022834	—	—	—	—	—	—	—	—	—
111	ANSI	—	022002	022005	022008	—	022011	—	—	—	—	—	—	—	—	—
121	MISC	—	—	—	—	—	—	—	022013	—	022015	—	—	—	—	—
127	ANSI	—	022003	022006	022009	022776	022012	022777	022014	—	022016	—	—	—	—	—
140	ISO	022425 <sup>(2)</sup>	022823	022827 <sup>(2)</sup>	022831	—	022835	—	022838	—	022841	—	—	—	—	—
178	ANSI	—	—	—	—	—	—	022778	—	022780	—	022783	022017	022786	—	—
180	ISO	—	022824	022828 <sup>(2)</sup>	022832	—	022836	—	022839	—	022842	—	022844	—	022846	—
197	ANSI	—	—	—	—	—	—	022779	—	022781	—	022784	022018	022787	021997	021998
250	ISO	—	022825	022829 <sup>(2)</sup>	022833	—	022837	—	022840	—	022843	—	022845	—	022847	—
254	MISC	—	—	—	—	—	—	—	—	022782	—	022785	—	022788	—	—

Additional spacer lengths are available for Dodge D-Flex Type-SC couplings. Minimum and maximum BSE's are shown in dimensional information on page 30.

(1) Type 1 spacer design

(2) Type 2 spacer design

### D-Flex Type SC coupling shaft hubs

Bore (mm)	Coupling size									
	5SC	6SC	7SC	8SC	9SC	10SC	11SC	12SC	13SC	14SC
Hardware kit	411982	411983	411984	411985	411986	411987	411988	411989	411990	—
Reborable	022220	022221	022222	022223	022224	022225	022226	022227	022228	660248
12	022848	—	—	—	—	—	—	—	—	—
14	022849	—	—	—	—	—	—	—	—	—
16	022850	022859	022871	—	—	—	—	—	—	—
18	022851	022860	022872	—	—	—	—	—	—	—
19	022852	022861	022873	—	—	—	—	—	—	—
20	022853	022862	022874	022885	—	—	—	—	—	—
22	022854	022863	022875	022886	—	—	—	—	—	—
24	022855	022864	022876	022887	022899	—	—	—	—	—
25	022856	022865	022877	022888	022900	—	—	—	—	—
28	022857	022866	022878	022889	022901	—	—	—	—	—
30	022858	022867	022879	022890	022902	022911	022922	—	—	—
32	—	022868	022880	022891	022903	022912	022923	—	—	—
35	—	022869	022881	022892	022904	022913	022924	—	022941	—
38	—	022870	022882	022893	022905	022914	022925	—	022942	—
40	—	—	022883	022894	022906	022915	022926	—	022943	—
42	—	—	022884	022895	022907	022916	022927	—	022944	—
45	—	—	—	022896	022908	022917	022928	—	022945	—
48	—	—	—	022897	022909	022918	022929	022935	022946	—
50	—	—	—	022898	022910	022919	022930	022936	022947	—
55	—	—	—	—	—	022920	022931	022937	022948	—
60	—	—	—	—	—	022921	022932	022938	022949	—
65	—	—	—	—	—	—	022933	022939	022950	—
70	—	—	—	—	—	—	022934	022940	022951	—
75	—	—	—	—	—	—	—	—	022952	—
80	—	—	—	—	—	—	—	—	022953	—
85	—	—	—	—	—	—	—	—	022954	—

\*Includes metric setscrews

(1) Unless otherwise specified, all D-Flex shaft hubs are clearance fit per ISO R775. See page 51 for additional details.