

HITEX COUPLINGS



HNX JAW COUPLINGS

HITEX
POWER TRANSMISSION COMPONENTS



JAW COUPLINGS



Specifications

- Torque range
19 – 3.900 Nm
- Torsionally flexible
- Failsafe
- Vibration reducing
- Axial plug-in

Coupling selection

The HNX jaw coupling selection should be made according to DIN 740-2. Proper dimensioning of the coupling should be done to ensure that the permissible coupling load never is exceeded in any operating condition.

The largest possible load produced by rated torque T_N should be used as a basis. Verify the rated torque of the application (T_N) by the following formula:

$$T_N \text{ (Nm)} = 9550 \cdot \frac{P \text{ (kW)}}{n \text{ (rpm)}}$$

The nominal torque of the coupling should be equal or higher to the application torque taking the ambient temperature in consideration.

$$TK_N \geq T_N \cdot S_t$$

The maximum torque of the coupling should be equal or higher to the peak torque of the motor (T_s) multiplied by the servicefactors for temperature (S_t), starting frequency (S_z) and shocks (S_u).

$$T_{Kmax} \geq T_s \cdot S_t \cdot S_z \cdot S_u$$

Servicefactors

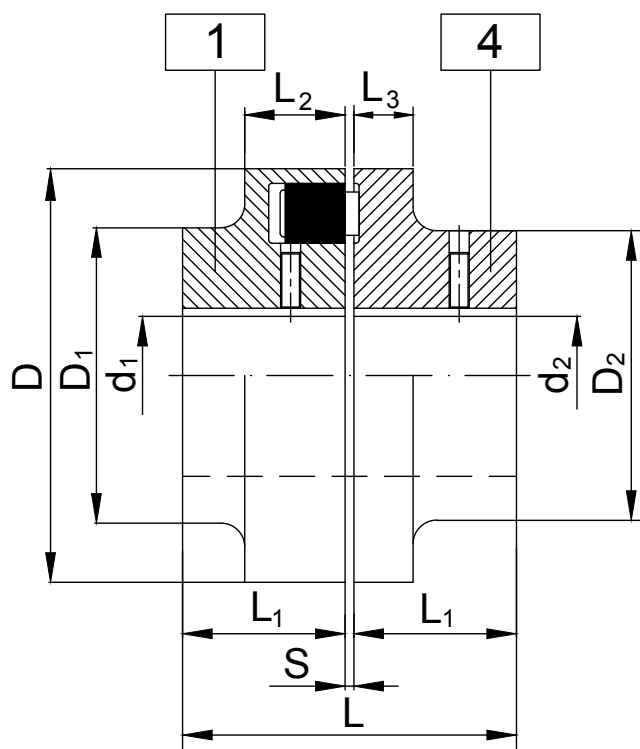
Servicefactor for starting frequency S_z				
Starting frequency per hour	100	200	400	800
S_z	1,0	1,2	1,4	1,6

Servicefactor for temperature S_t				
Temperature range	-30° C +30° C	+40° C	+60° C	+80° C
S_t	1,0	1,2	1,4	1,6

Servicefactor for shocks S_u	
Gentle shock load	1,5
Medium shock load	1,8
Heavy shock load	2,5

Shaft-hub connection

The shaft-hub connection should always be verified by the customer. The maximum torque of the drive should always be lower than the torque which the shaft-hub connection can bear. In case of keyway connection it is recommended to verify the permissible surface pressure of the coupling hub.

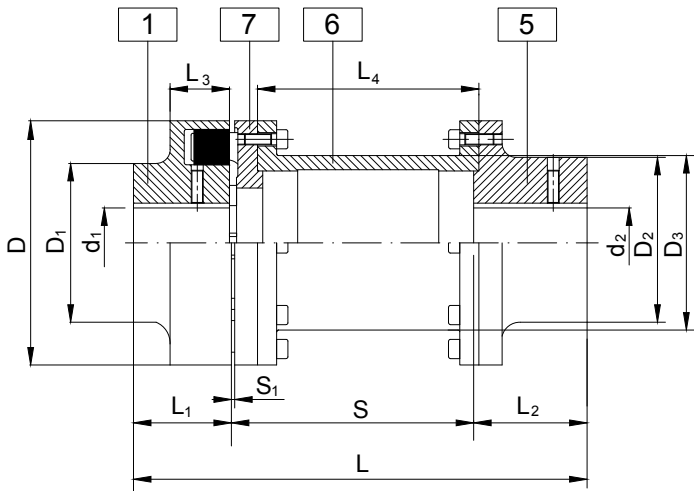


HNX

Size	Rated torque T_{KN} (Nm)	Max. speed n_{kmax} (1/min)	Max. finish bore		Dimensions (mm)								Mass moment of inertia* J (kgm ²)	Weight* m (kg)	Max. displacements		
			d_1	d_2	D	D_1	D_2	L	L_1	L_2	L_3	S			Δka (mm)	Δkr (mm)	Δkw (°)
68	34	7.000	24	28	68	68	50	43	20	20	8	3	0,0002	0,54	0,20	0,20	0,15
80	60	6.000	30	38	80	80	68	63	30	30	10	3	0,0006	1,3	0,20	0,20	0,12
95	100	5.500	42	42	95	76	76	73	35	30	12	3	0,0013	2,2	0,20	0,20	0,12
110	160	5.300	48	48	110	86	86	83	40	34	14	3	0,0030	3,3	0,20	0,20	0,10
125	240	5.100	55	55	125	100	100	103	50	36	18	3	0,0060	5,2	0,25	0,25	0,10
140	360	4.900	60	60	140	100	100	113	55	34	20	3	0,0070	5,6	0,25	0,25	0,10
160	560	4.250	65	65	160	108	108	124	60	39	20	4	0,01	7,8	0,30	0,30	0,10
180	880	3.800	75	75	180	125	125	144	70	42	20	4	0,02	11,5	0,30	0,30	0,10
200	1.340	3.400	85	85	200	140	140	164	80	47	24	4	0,04	16	0,30	0,30	0,09
225	2.000	3.000	90	90	225	150	150	184	90	52	18	4	0,07	20	0,35	0,35	0,09
250	2.800	2.750	100	100	250	165	165	205,5	100	60	18	5,5	0,12	29	0,35	0,35	0,08
280	3.900	2.450	110	110	280	180	180	205,5	100	65	20	5,5	0,18	38	0,40	0,40	0,08

* Value given for hub with max. bores

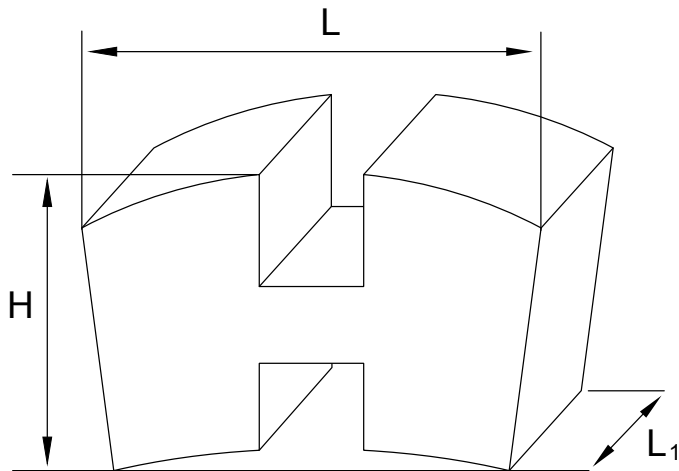
JAW COUPLINGS



HNX-S

Size	Rated torque T_{RN} (Nm)	Max. speed n_{max} (1/min)	Max. finish bore		Dimensions (mm)											Mass moment of inertia*		Weight*	Max. displacements		
			d_1	d_2	D	D_1	D_2	D_3	L	L_1	L_2	L_3	L_4	S	S_1	J (kgm ²)	J1 (kgm ²)		m (kg)	Δk_a (mm)	Δk_r (mm)
80	60	6.000	30	32	80	80	55	51	175	30	45	30	87	100	5	0,0006	0,001	2,6	0,20	0,20	0,12
									215				127	140			5	2,7			
95	100	5.500	42	42	95	76	70	63	180	35	45	30	87	100	5	0,0013	0,003	3,5	0,20	0,20	0,12
									220				127	140			5	3,8			
110	160	5.300	48	48	110	86	80	73	190	40	60	34	85	100	5	0,003	0,005	5,2	0,20	0,20	0,10
									230				125	140			6	5,4			
									280				165	180			6	6			
125	240	5.100	55	55	125	100	90	85	200	50	80	36	85	100	5	0,006	0,010	7,2	0,25	0,25	0,10
									240				125	140			6	7,7			
									290				165	180			8	8,2			
140	360	4.900	60	60	140	100	100	91	220	55	80	34	82	100	5	0,007	0,018	10	0,25	0,25	0,10
									260				122	140			6	10,5			
									300				162	180			6	11			
160	560	4.250	65	65	160	108	108	111	230	60	80	39	81,5	100	6	0,01	0,030	13	0,30	0,30	0,10
									270				121,5	140			6	13,7			
									310				161,5	180			6	14,5			
180	880	3.800	75	75	180	125	125	131	290	70	80	42	121,5	140	6	0,02	0,054	18,5	0,30	0,30	0,10
									330				161,5	180			6	19,4			
									400				231,5	250			6	22			
200	1.340	3.400	85	85	200	140	140	144	310	80	90	47	118,5	140	6	0,04	0,095	25,6	0,30	0,30	0,09
									350				158,5	180			6	26,5			
									420				228,5	250			6	28,5			
225	2.000	3.000	90	90	225	150	150	169	330	90	100	52	118,5	140	6	0,07	0,158	34	0,35	0,35	0,09
									370				158,5	180			6	35			
									440				228,5	250			6	38			
250	2.800	2.750	100	100	250	165	165	185	390	100	110	60	152,5	180	8	0,012	0,27	48	0,35	0,35	0,08
									460				222,5	250			8	50			
280	3.900	2.450	110	110	280	180	180	215	480	100	120	65	222,5	250	8	0,18	52	0,40	0,40	0,08	

* Value given for coupling with max. bores



Flexible elements 80 Sh-A (standard)

Size	Dimensions ± (mm)			Number of elements per set	Weight per set (kg)
	L	L ₁	H		
68	22	9	11	5	0,015
80	20	10	11	6	0,020
95	25	12	13	6	0,030
110	29	15	14	6	0,045
125	32	18	15	6	0,06
140	37	20	17	6	0,09
160	36	23	18	7	0,12
180	36	24	21	8	0,17
200	38	27	24	8	0,23
225	42	32	27	8	0,30
250	46	35	32	8	0,38
280	53	39	35	8	0,85

PRODUCT GROUPS



Couplings



Locking Assemblies



Universal Joints



Clutches & Brakes



Brakes



Collars

Skilled to get your ideas fulfilled

HITEX is a range of power transmission components dedicated to add value to all OEM industrial creations.

HITEX is produced using the latest technology & rich experience of its factories to provide innovative and cost-effective engineered solutions.

Honored to have the opportunity to serve OEM customers worldwide, HITEX provides prompt and reliable deliveries to meet all aftersales requirements.

Our best technology is human

**European
Transmission
Company**

The **Powerful** Solution

European Transmission Company B.V.
Laan van de Ram 49
7324 BW Apeldoorn
The Netherlands
Tel. +31 (0)881 200 300
info@europeantransmissioncompany.eu
www.europeantransmissioncompany.eu

HITEX
POWER TRANSMISSION COMPONENTS

Images may differ from reality. All content (logo, text, data, graphics, and images) may not be reproduced, copied, transmitted or manipulated without the prior written permission of the AZ Hollink Group. All content (text, diagrams and pictures) is subject to alteration. We accept no liability.

www.hitex.nl