

# HITEX UNIVERSAL JOINTS



## HUJ UNIVERSAL JOINTS

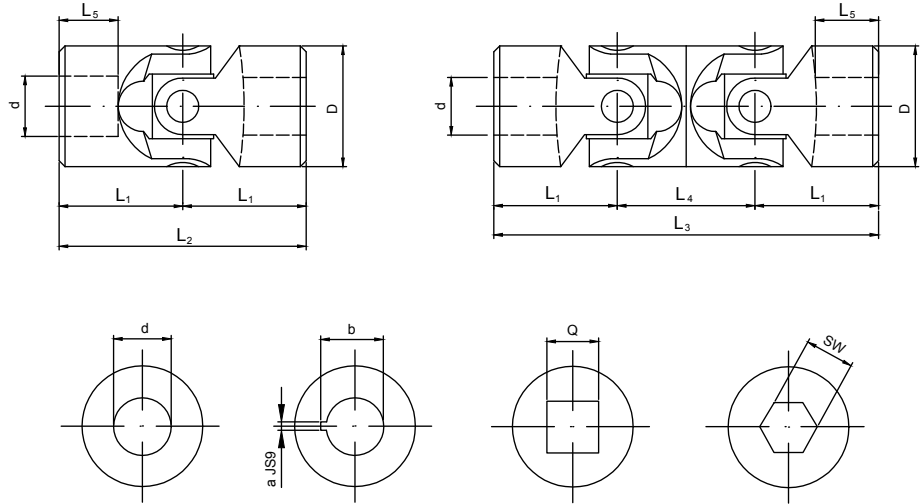
**HITEX**  
POWER TRANSMISSION COMPONENTS



# UNIVERSAL JOINTS

## Specifications

- Suitable up to a maximum speed of 1.000 rpm
- Maximum articulation angle 45° for each joint
- Type G, single joint
- Type GD, double joint
- G to DIN 808, GB to DIN 808/7551
- Standard with finish bore H7. On request with keyway, square bore or hexacon bore



HUJ Type G and GD (according to DIN 808)

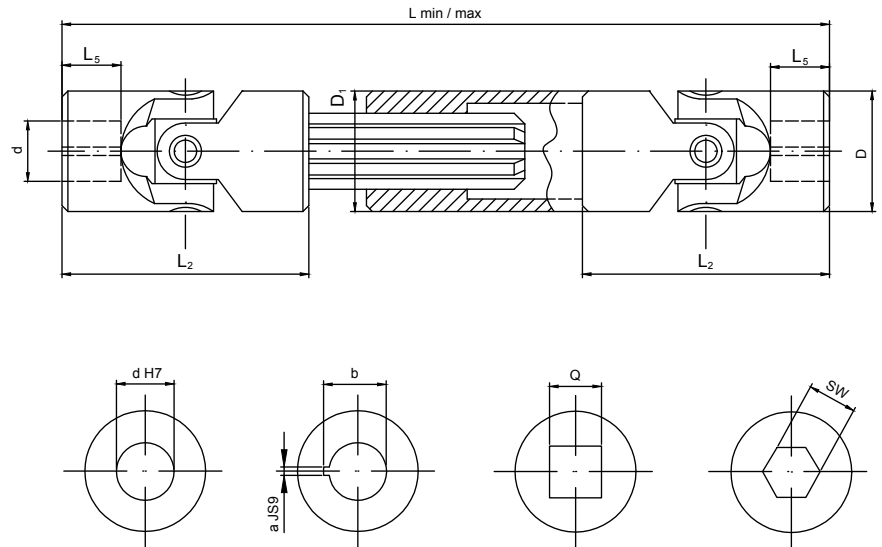
| Types and size |      | Dimensions (mm) |    |                |                |                |                |                |         |      |        |         | Weight |         |
|----------------|------|-----------------|----|----------------|----------------|----------------|----------------|----------------|---------|------|--------|---------|--------|---------|
| G              | GD   | d (H7)          | D  | L <sub>1</sub> | L <sub>2</sub> | L <sub>3</sub> | L <sub>4</sub> | L <sub>5</sub> | a (JS9) | b    | Q (H8) | SW (H8) | G (kg) | GD (kg) |
| 01G            | 01GD | 6               | 16 | 17             | 34             | 56             | 22             | 8              | 2       | 7,0  | 6      | 6       | 0,05   | 0,08    |
| 02G            | 02GD | 8               | 16 | 20             | 40             | 62             | 22             | 11             | 2       | 9,0  | 8      | 8       | 0,05   | 0,08    |
| 03G            | 03GD | 10              | 22 | 24             | 48             | 74             | 26             | 12             | 3       | 11,4 | 10     | 10      | 0,10   | 0,15    |
| 04G            | 04GD | 12              | 25 | 28             | 56             | 86             | 30             | 13             | 4       | 13,8 | 12     | 12      | 0,16   | 0,25    |
| 05G            | 05GD | 14              | 28 | 30             | 60             | 96             | 36             | 14             | 5       | 16,3 | 14     | 14      | 0,20   | 0,40    |
| 1G             | 1GD  | 16              | 32 | 34             | 68             | 104            | 36             | 16             | 5       | 18,3 | 16     | 16      | 0,30   | 0,45    |
| 2G             | 2GD  | 18              | 36 | 37             | 74             | 114            | 40             | 17             | 6       | 20,8 | 18     | 18      | 0,45   | 0,70    |
| 3G             | 3GD  | 20              | 42 | 41             | 82             | 128            | 46             | 18             | 6       | 22,8 | 20     | 20      | 0,60   | 1,00    |
| 4G             | 4GD  | 22              | 45 | 47,5           | 95             | 145            | 50             | 22             | 6       | 24,8 | 22     | 22      | 0,95   | 1,55    |
| 5G             | 5GD  | 25              | 50 | 54             | 108            | 163            | 55             | 26             | 8       | 28,3 | 25     | 25      | 1,20   | 2,00    |
| 6G             | 6GD  | 30              | 58 | 61             | 122            | 190            | 68             | 29             | 8       | 33,3 | 30     | 30      | 1,85   | 2,90    |
| 6G1            | 6GD1 | 32              | 58 | 65             | 130            | 198            | 68             | 33             | 10      | 35,3 | 30     | 30      | 2,00   | 3,00    |
| 7G             | 7GD  | 35              | 70 | 70             | 140            | 212            | 72             | 35             | 10      | 38,3 | -      | -       | 3,15   | 4,75    |
| 8G             | 8GD  | 40              | 80 | 80             | 160            | 245            | 85             | 39             | 12      | 43,3 | -      | -       | 4,60   | 7,20    |
| 9G             | 9GD  | 50              | 95 | 95             | 190            | 290            | 100            | 46             | 14      | 53,8 | -      | -       | 7,60   | 12,0    |

HUJ Type GB and GBD (according to DIN 808/7551)

| Types and size |       | Dimensions (mm) |    |                |                |                |                |                |         |      |        |         | Weight |         |
|----------------|-------|-----------------|----|----------------|----------------|----------------|----------------|----------------|---------|------|--------|---------|--------|---------|
| GB             | GBD   | d (H7)          | D  | L <sub>1</sub> | L <sub>2</sub> | L <sub>3</sub> | L <sub>4</sub> | L <sub>5</sub> | a (JS9) | b    | Q (H8) | SW (H8) | G (kg) | GD (kg) |
| 03GB           | 03GBD | 10              | 16 | 26             | 52             | 74             | 22             | 15             | 3       | 11,4 | 8      | 8       | 0,05   | 0,08    |
| 04GB           | 04GBD | 12              | 22 | 31             | 62             | 88             | 26             | 18             | 4       | 13,8 | 10     | 10      | 0,12   | 0,20    |
| 1GB            | 1GBD  | 16              | 25 | 37             | 74             | 104            | 30             | 21             | 5       | 18,3 | 12     | 12      | 0,20   | 0,30    |
| 3GB            | 3GBD  | 20              | 32 | 43             | 86             | 124            | 38             | 24             | 6       | 22,8 | 16     | 16      | 0,35   | 0,50    |
| 5GB            | 5GBD  | 25              | 42 | 54             | 108            | 156            | 48             | 31             | 8       | 28,3 | 20     | 20      | 0,80   | 1,20    |
| 6GB            | 6GBD  | 30              | 50 | 66             | 132            | 188            | 56             | 38             | 8       | 33,3 | 25     | 25      | 1,20   | 1,70    |
| 8GB            | 8GBD  | 40              | 70 | 83             | 166            | 238            | 72             | 47             | 12      | 43,3 | -      | -       | 2,90   | 4,30    |

## Specifications

- Suitable up to a maximum speed of 1.000 rpm
- Maximum articulation angle 45° for each joint
- Standard with H7 finish bore with keyway
- On request with round bores, square bore, hexacon bore or quick release



HUI Type G and GD (according to DIN 808)

| Size | Dimensions (mm) |    |                |                |                                     |         |      |        |         |            | Spline shaft | D <sub>1</sub> |
|------|-----------------|----|----------------|----------------|-------------------------------------|---------|------|--------|---------|------------|--------------|----------------|
|      | d (H7)          | D  | L <sub>2</sub> | L <sub>5</sub> | L <sub>min</sub> / L <sub>max</sub> | a (JS9) | b    | Q (H8) | SW (H8) |            |              |                |
| 01GA | 6               | 16 | 34             | 8              | <- ->                               | 2       | 7    | 6      | 6       | SW8        | 16           |                |
| 02GA | 8               | 16 | 40             | 11             | <- ->                               | 2       | 9    | 8      | 8       | SW8        | 16           |                |
| 03GA | 10              | 22 | 48             | 12             | <- ->                               | 3       | 11,4 | 10     | 10      | 11 x 14 Z6 | 22           |                |
| 04GA | 12              | 25 | 56             | 13             | <- ->                               | 4       | 13,8 | 12     | 12      | 13 x 16 Z6 | 26           |                |
| 05GA | 14              | 28 | 60             | 14             | <- ->                               | 5       | 16,3 | 14     | 14      | 13 x 16 Z6 | 29           |                |
| 1GA  | 16              | 32 | 68             | 16             | <- ->                               | 5       | 18,3 | 16     | 16      | 16 x 20 Z6 | 32           |                |
| 2GA  | 18              | 36 | 74             | 17             | <- ->                               | 6       | 20,8 | 18     | 18      | 18 x 22 Z6 | 37           |                |
| 3GA  | 20              | 42 | 82             | 18             | <- ->                               | 6       | 22,8 | 20     | 20      | 21 x 25 Z6 | 42           |                |
| 4GA  | 22              | 45 | 95             | 22             | <- ->                               | 6       | 24,8 | 22     | 22      | 23 x 28 Z6 | 47           |                |
| 5GA  | 25              | 50 | 108            | 26             | <- ->                               | 8       | 28,3 | 25     | 25      | 26 x 32 Z6 | 52           |                |
| 6GA  | 30              | 58 | 122            | 29             | <- ->                               | 8       | 33,3 | 30     | 30      | 32 x 38 Z8 | 58           |                |
| 7GA  | 35              | 70 | 140            | 35             | <- ->                               | 10      | 38,3 | **     | **      | 36 x 42 Z8 | 70           |                |
| 8GA  | 40              | 80 | 160            | 39             | <- ->                               | 12      | 43,3 | **     | **      | 42 x 48 Z8 | 80           |                |
| 9GA  | 50              | 95 | 190            | 46             | <- ->                               | 14      | 53,8 | **     | **      | 46 x 54 Z8 | 95           |                |

Preferred lengths

| Size | Dimensions (mm)                     |     |     |     |     |     |     |     |     |     |
|------|-------------------------------------|-----|-----|-----|-----|-----|-----|-----|-----|-----|
|      | L <sub>min</sub> / L <sub>max</sub> |     |     |     |     |     |     |     |     |     |
| 03   | 140                                 | 160 | 180 | 230 |     |     |     |     |     |     |
|      | 170                                 | 200 | 240 | 330 |     |     |     |     |     |     |
| 04   | 160                                 | 180 | 200 | 220 | 250 | 280 | 300 |     |     |     |
|      | 190                                 | 225 | 270 | 300 | 355 | 420 | 450 |     |     |     |
| 05   | 170                                 | 180 | 200 | 220 | 250 | 280 | 300 | 350 | 400 | 450 |
|      | 200                                 | 220 | 260 | 300 | 350 | 420 | 450 | 550 | 650 |     |
| 1    | 190                                 | 210 | 240 | 250 | 275 | 300 | 380 | 400 |     |     |
|      | 210                                 | 250 | 320 | 350 | 390 | 430 | 590 | 630 |     |     |
| 2    | 230                                 | 250 | 270 | 290 | 300 | 400 | 500 |     |     |     |
|      | 280                                 | 320 | 370 | 400 | 415 | 620 | 820 |     |     |     |
| 3    | 250                                 | 270 | 290 | 320 | 380 | 420 | 500 |     |     |     |
|      | 300                                 | 340 | 380 | 440 | 560 | 640 | 800 |     |     |     |
| 4    | 250                                 | 270 | 290 | 330 | 350 | 470 |     |     |     |     |
|      | 280                                 | 320 | 350 | 430 | 470 | 710 |     |     |     |     |
| 5    | 295                                 | 310 | 350 | 380 | 420 | 460 | 500 |     |     |     |
|      | 345                                 | 375 | 450 | 500 | 590 | 660 | 745 |     |     |     |
| 6    | 330                                 | 350 | 370 | 400 | 450 | 500 | 540 |     |     |     |
|      | 380                                 | 420 | 455 | 510 | 620 | 720 | 795 |     |     |     |

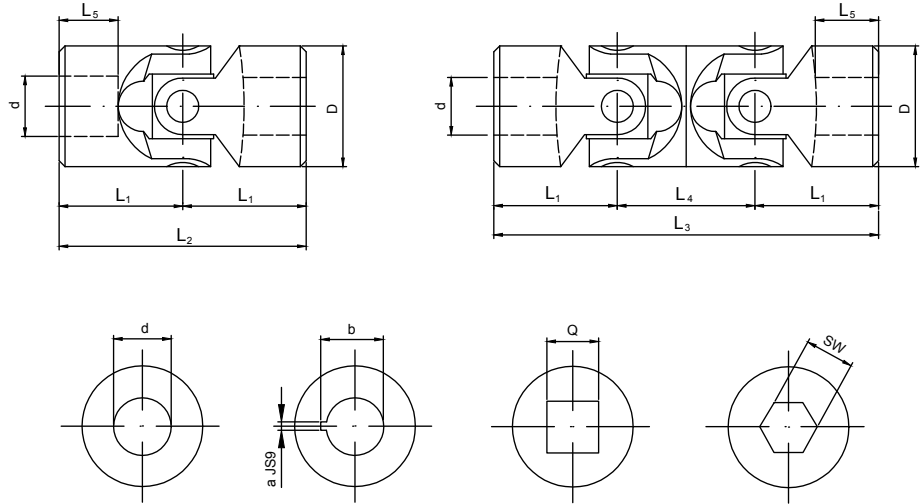
HUI Type GBA (according to DIN 808/7551)

| Size  | Dimensions (mm) |    |                |                |                                     |         |      |        |         |            | Spline shaft | D <sub>1</sub> |
|-------|-----------------|----|----------------|----------------|-------------------------------------|---------|------|--------|---------|------------|--------------|----------------|
|       | d (H7)          | D  | L <sub>2</sub> | L <sub>5</sub> | L <sub>min</sub> / L <sub>max</sub> | a (JS9) | b    | Q (H8) | SW (H8) |            |              |                |
| 03GBA | 10              | 16 | 52             | 15             | <- ->                               | 3       | 11,4 | 8      | 8       | SW 8       | 16           |                |
| 04GBA | 12              | 22 | 62             | 18             | <- ->                               | 4       | 13,8 | 10     | 10      | 11 x 14 Z6 | 22           |                |
| 1GBA  | 16              | 25 | 74             | 21             | <- ->                               | 5       | 18,3 | 12     | 12      | 13 x 16 Z6 | 26           |                |
| 3GBA  | 20              | 32 | 86             | 24             | <- ->                               | 6       | 22,8 | 16     | 16      | 16 x 20 Z6 | 32           |                |
| 5GBA  | 25              | 42 | 108            | 31             | <- ->                               | 8       | 28,3 | 20     | 20      | 21 x 25 Z6 | 42           |                |
| 6GBA  | 30              | 50 | 132            | 38             | <- ->                               | 8       | 33,3 | 25     | 25      | 26 x 32 Z6 | 52           |                |
| 8GBA  | 40              | 70 | 166            | 47             | <- ->                               | 12      | 43,3 | **     | **      | 36 x 42 Z8 | 70           |                |

# UNIVERSAL JOINTS

## Specifications

- Suitable up to a maximum speed of 4.000 rpm
- Maximum articulation angle 45° for each joint
- Type H, single joint
- Type HD, double joint
- H to DIN 808, HB to DIN 808/7551
- Standard with finish bore H7. On request with keyway, square bore or hexacon bore



HUJ Type H and HD (according to DIN 808)

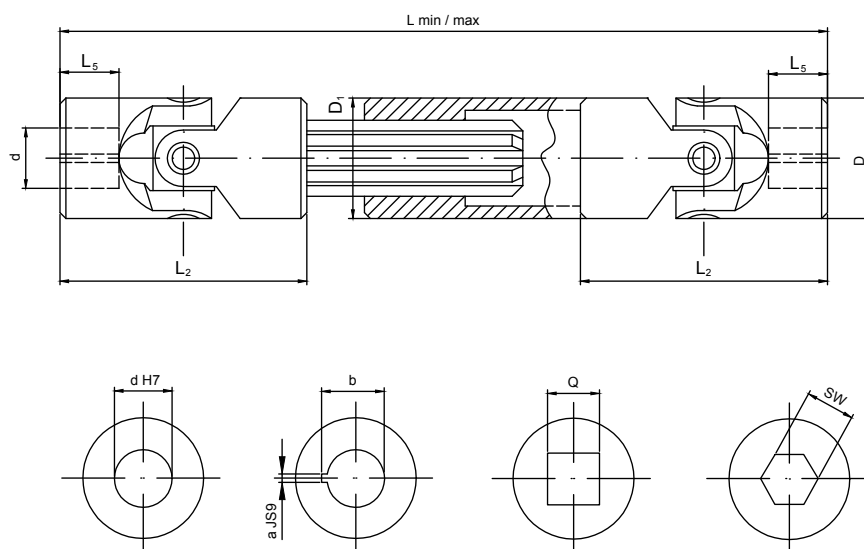
| Types and size |      | Dimensions (mm) |    |                |                |                |                |                |         |      |        |         | Weight |         |
|----------------|------|-----------------|----|----------------|----------------|----------------|----------------|----------------|---------|------|--------|---------|--------|---------|
| H              | HD   | d (H7)          | D  | L <sub>1</sub> | L <sub>2</sub> | L <sub>3</sub> | L <sub>4</sub> | L <sub>5</sub> | a (JS9) | b    | Q (H8) | SW (H8) | H (kg) | HD (kg) |
| 03H            | 03HD | 10              | 22 | 24             | 48             | 74             | 26             | 12             | 3       | 11,4 | 10     | 10      | 0,10   | 0,15    |
| 04H            | 04HD | 12              | 25 | 28             | 56             | 86             | 30             | 13             | 4       | 13,8 | 12     | 12      | 0,16   | 0,25    |
| 05H            | 05HD | 14              | 28 | 30             | 60             | 96             | 36             | 14             | 5       | 16,3 | 14     | 14      | 0,20   | 0,40    |
| 1H             | 1HD  | 16              | 32 | 34             | 68             | 104            | 36             | 16             | 5       | 18,3 | 16     | 16      | 0,30   | 0,45    |
| 2H             | 2HD  | 18              | 36 | 37             | 74             | 114            | 40             | 17             | 6       | 20,8 | 18     | 18      | 0,45   | 0,70    |
| 3H             | 3HD  | 20              | 42 | 41             | 82             | 128            | 46             | 18             | 6       | 22,8 | 20     | 20      | 0,60   | 1,00    |
| 4H             | 4HD  | 22              | 45 | 47,5           | 95             | 145            | 50             | 22             | 6       | 24,8 | 22     | 22      | 0,95   | 1,55    |
| 5H             | 5HD  | 25              | 50 | 54             | 108            | 163            | 55             | 26             | 8       | 28,3 | 25     | 25      | 1,20   | 2,00    |
| 6H             | 6HD  | 30              | 58 | 61             | 122            | 190            | 68             | 29             | 8       | 33,3 | 30     | 30      | 1,85   | 2,90    |
| 6H1            | 6HD1 | 32              | 58 | 65             | 130            | 198            | 68             | 33             | 10      | 35,3 | 30     | 30      | 2,00   | 3,00    |
| 7H             | 7HD  | 35              | 70 | 70             | 140            | 212            | 72             | 35             | 10      | 38,3 | -      | -       | 3,15   | 4,75    |
| 8H             | 8HD  | 40              | 80 | 80             | 160            | 245            | 85             | 39             | 12      | 43,3 | -      | -       | 4,60   | 7,20    |
| 9H             | 9HD  | 50              | 95 | 95             | 190            | 290            | 100            | 46             | 14      | 53,8 | -      | -       | 7,60   | 12,0    |

HUJ Type HB and HBD (according to DIN 808/7551)

| Types and size |       | Dimensions (mm) |    |                |                |                |                |                |         |      |        |         | Weight  |          |
|----------------|-------|-----------------|----|----------------|----------------|----------------|----------------|----------------|---------|------|--------|---------|---------|----------|
| H              | HD    | d (H7)          | D  | L <sub>1</sub> | L <sub>2</sub> | L <sub>3</sub> | L <sub>4</sub> | L <sub>5</sub> | a (JS9) | b    | Q (H8) | SW (H8) | HB (kg) | HBD (kg) |
| 04HB           | 04HBD | 12              | 22 | 31             | 62             | 88             | 26             | 18             | 4       | 13,8 | 10     | 10      | 0,12    | 0,2      |
| 1HB            | 1HBD  | 16              | 25 | 37             | 74             | 104            | 30             | 21             | 5       | 18,3 | 12     | 12      | 0,2     | 0,3      |
| 3HB            | 3HBD  | 20              | 32 | 43             | 86             | 124            | 38             | 24             | 6       | 22,8 | 16     | 16      | 0,35    | 0,5      |
| 5HB            | 5HBD  | 25              | 42 | 54             | 108            | 156            | 48             | 31             | 8       | 28,3 | 20     | 20      | 0,8     | 1,2      |
| 6HB            | 6HBD  | 30              | 50 | 66             | 132            | 188            | 56             | 38             | 8       | 33,3 | 25     | 25      | 1,2     | 1,7      |
| 8HB            | 8HBD  | 40              | 70 | 83             | 166            | 238            | 72             | 47             | 12      | 43,3 | -      | -       | 2,9     | 4,3      |

## Specifications

- Suitable up to a maximum speed of 4.000 rpm
- Maximum articulation angle 45° for each joint
- Standard with H7 finish bore with keyway
- On request with round bores, square bore, hexacon bore or quick release



HUJ Type HA (according to DIN 808)

| Size | Dimensions (mm) |    |                |                |                                     |         |      |        |         |            | Spline shaft | D <sub>1</sub> |
|------|-----------------|----|----------------|----------------|-------------------------------------|---------|------|--------|---------|------------|--------------|----------------|
|      | d (H7)          | D  | L <sub>2</sub> | L <sub>5</sub> | L <sub>min</sub> / L <sub>max</sub> | a (JS9) | b    | Q (H8) | SW (H8) |            |              |                |
| 03HA | 10              | 22 | 48             | 12             | <- ->                               | 3       | 11,4 | 10     | 10      | 11 x 14 Z6 | 22           |                |
| 04HA | 12              | 25 | 56             | 13             | <- ->                               | 4       | 13,8 | 12     | 12      | 13 x 16 Z6 | 26           |                |
| 05HA | 14              | 28 | 60             | 14             | <- ->                               | 5       | 16,3 | 14     | 14      | 13 x 16 Z6 | 29           |                |
| 1HA  | 16              | 32 | 68             | 16             | <- ->                               | 5       | 18,3 | 16     | 16      | 16 x 20 Z6 | 32           |                |
| 2HA  | 18              | 36 | 74             | 17             | <- ->                               | 6       | 20,8 | 18     | 18      | 18 x 22 Z6 | 37           |                |
| 3HA  | 20              | 42 | 82             | 18             | <- ->                               | 6       | 22,8 | 20     | 20      | 21 x 25 Z6 | 42           |                |
| 4HA  | 22              | 45 | 95             | 22             | <- ->                               | 6       | 24,8 | 22     | 22      | 23 x 28 Z6 | 47           |                |
| 5HA  | 25              | 50 | 108            | 26             | <- ->                               | 8       | 28,3 | 25     | 25      | 26 x 32 Z6 | 52           |                |
| 6HA  | 30              | 58 | 122            | 29             | <- ->                               | 8       | 33,3 | 30     | 30      | 32 x 38 Z8 | 58           |                |
| 7HA  | 35              | 70 | 140            | 35             | <- ->                               | 10      | 38,3 | **     | **      | 36 x 42 Z8 | 70           |                |
| 8HA  | 40              | 80 | 160            | 39             | <- ->                               | 12      | 43,3 | **     | **      | 42 x 48 Z8 | 80           |                |
| 9HA  | 50              | 95 | 190            | 46             | <- ->                               | 14      | 53,8 | **     | **      | 46 x 54 Z8 | 95           |                |
| 8GA  | 40              | 80 | 160            | 39             | <- ->                               | 12      | 43,3 | **     | **      | 42 x 48 Z8 | 80           |                |
| 9GA  | 50              | 95 | 190            | 46             | <- ->                               | 14      | 53,8 | **     | **      | 46 x 54 Z8 | 95           |                |

Preferred lengths

| Size | Dimensions (mm)                     |     |     |     |     |     |     |     |     |  |
|------|-------------------------------------|-----|-----|-----|-----|-----|-----|-----|-----|--|
|      | L <sub>min</sub> / L <sub>max</sub> |     |     |     |     |     |     |     |     |  |
| 03   | 140                                 | 160 | 180 | 230 |     |     |     |     |     |  |
|      | 170                                 | 200 | 240 | 330 |     |     |     |     |     |  |
| 04   | 160                                 | 180 | 200 | 220 | 250 | 280 | 300 |     |     |  |
|      | 190                                 | 225 | 270 | 300 | 355 | 420 | 450 |     |     |  |
| 05   | 170                                 | 180 | 200 | 220 | 250 | 280 | 300 | 350 | 400 |  |
|      | 200                                 | 220 | 260 | 300 | 350 | 420 | 450 | 550 | 650 |  |
| 1    | 190                                 | 210 | 240 | 250 | 275 | 300 | 380 | 400 |     |  |
|      | 210                                 | 250 | 320 | 350 | 390 | 430 | 590 | 630 |     |  |
| 2    | 230                                 | 250 | 270 | 290 | 300 | 400 | 500 |     |     |  |
|      | 280                                 | 320 | 370 | 400 | 415 | 620 | 820 |     |     |  |
| 3    | 250                                 | 270 | 290 | 320 | 380 | 420 | 500 |     |     |  |
|      | 300                                 | 340 | 380 | 440 | 560 | 640 | 800 |     |     |  |
| 4    | 250                                 | 270 | 290 | 330 | 350 | 470 |     |     |     |  |
|      | 280                                 | 320 | 350 | 430 | 470 | 710 |     |     |     |  |
| 5    | 295                                 | 310 | 350 | 380 | 420 | 460 | 500 |     |     |  |
|      | 345                                 | 375 | 450 | 500 | 590 | 660 | 745 |     |     |  |
| 6    | 330                                 | 350 | 370 | 400 | 450 | 500 | 540 |     |     |  |
|      | 380                                 | 420 | 455 | 510 | 620 | 720 | 795 |     |     |  |

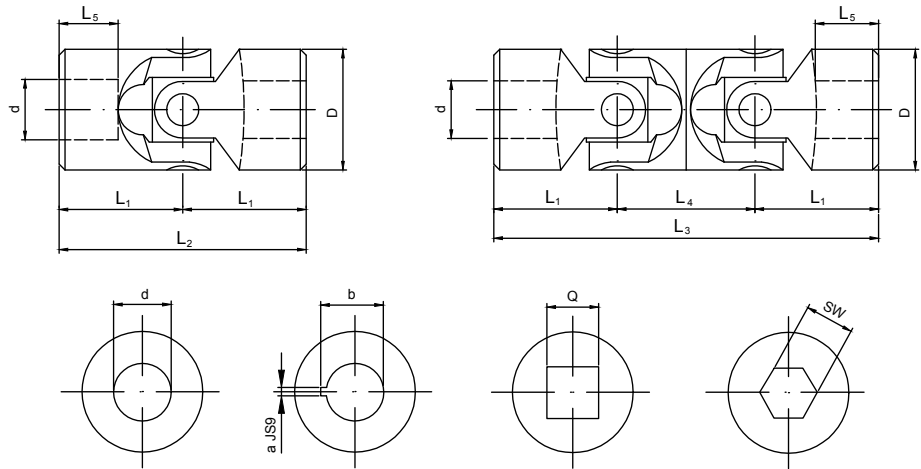
HUJ Type HBA (according to DIN 808/7551)

| Size  | Dimensions (mm) |    |                |                |                                     |         |      |        |         |            | Spline shaft | D <sub>1</sub> |
|-------|-----------------|----|----------------|----------------|-------------------------------------|---------|------|--------|---------|------------|--------------|----------------|
|       | d (H7)          | D  | L <sub>2</sub> | L <sub>5</sub> | L <sub>min</sub> / L <sub>max</sub> | a (JS9) | b    | Q (H8) | SW (H8) |            |              |                |
| 04HBA | 12              | 22 | 62             | 18             | <- ->                               | 4       | 13,8 | 10     | 10      | 11 x 14 Z6 | 22           |                |
| 1HBA  | 16              | 25 | 74             | 21             | <- ->                               | 5       | 18,3 | 12     | 12      | 13 x 16 Z6 | 26           |                |
| 3HBA  | 20              | 32 | 86             | 24             | <- ->                               | 6       | 22,8 | 16     | 16      | 16 x 20 Z6 | 32           |                |
| 5HBA  | 25              | 42 | 108            | 31             | <- ->                               | 8       | 28,3 | 20     | 20      | 21 x 25 Z6 | 42           |                |
| 6HBA  | 30              | 50 | 132            | 38             | <- ->                               | 8       | 33,3 | 25     | 25      | 26 x 32 Z6 | 52           |                |
| 8HBA  | 40              | 70 | 166            | 47             | <- ->                               | 12      | 43,3 | **     | **      | 36 x 42 Z8 | 70           |                |

# UNIVERSAL JOINTS

## Specifications

- Material 1.4301
- Suitable up to a maximum speed of 300 rpm
- Maximum articulation angle 45° for each joint
- Type X, single universal joint
- Type XD, double universal joint
- According to DIN 808
- Available with finish bore H7. On request with keyway, square bore or hexacon bore

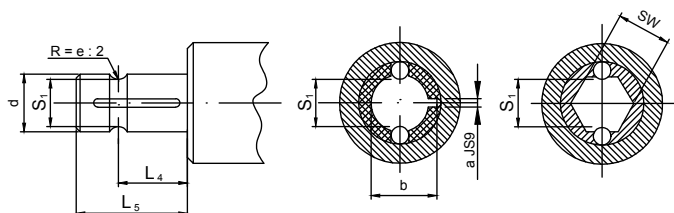
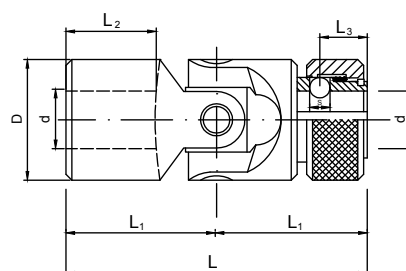


HUJ Type X and XD (according to DIN 808)

| Types and size |      | Dimensions (mm) |    |                |                |                |                |                |         |      |        |         | Weight |         |
|----------------|------|-----------------|----|----------------|----------------|----------------|----------------|----------------|---------|------|--------|---------|--------|---------|
| X              | XD   | d (H7)          | D  | L <sub>1</sub> | L <sub>2</sub> | L <sub>3</sub> | L <sub>4</sub> | L <sub>5</sub> | a (JS9) | b    | Q (H8) | SW (H8) | X (kg) | XD (kg) |
| 01X            | 01XD | 6               | 16 | 17             | 34             | 56             | 22             | 8              | 2       | 7    | 6      | 6       | 0,05   | 0,08    |
| 02X            | 02XD | 8               | 16 | 20             | 40             | 62             | 22             | 11             | 2       | 9    | 8      | 8       | 0,05   | 0,08    |
| 03X            | 03XD | 10              | 22 | 24             | 48             | 74             | 26             | 12             | 3       | 11,4 | 10     | 10      | 0,10   | 0,15    |
| 04X            | 04XD | 12              | 25 | 28             | 56             | 86             | 30             | 13             | 4       | 13,8 | 12     | 12      | 0,16   | 0,25    |
| 1X             | 1XD  | 16              | 32 | 34             | 68             | 104            | 36             | 16             | 5       | 18,3 | 16     | 16      | 0,30   | 0,45    |
| 3X             | 3XD  | 20              | 42 | 41             | 82             | 128            | 46             | 18             | 6       | 22,8 | 20     | 20      | 0,60   | 1,00    |
| 5X             | 5XD  | 25              | 50 | 54             | 108            | 163            | 55             | 26             | 8       | 28,3 | 25     | 25      | 1,20   | 2,00    |
| 6X             | 6XD  | 30              | 58 | 61             | 122            | 190            | 68             | 29             | 8       | 33,3 | 30     | 30      | 1,85   | 2,90    |

## Specifications

- Type GR, universal joints with plain bearing
- Type HR, universal joints with needle bearing
- Type GR, Suitable up to a max. speed of 1.000 rpm
- Type HR, Suitable up to a max. speed of 4.000 (1/min)
- Maximum articulation angle 45°
- According to DIN 808
- Standard with finish bore H7 with keyway to DIN 6885-1 (JS9) or with hexacon bore



HUJ Type GR and HR

| Types and size |      | Dimensions (mm) |    |     |                |                |                |      |                |         |      |         |
|----------------|------|-----------------|----|-----|----------------|----------------|----------------|------|----------------|---------|------|---------|
| GR             | HR   | d (H7)          | D  | L   | L <sub>1</sub> | L <sub>2</sub> | L <sub>3</sub> | S    | S <sub>1</sub> | a (JS9) | b    | SW (H8) |
| 02GR           | -    | 8               | 16 | 52  | 26             | 14             | 9,5            | 3,5  | 6,3            | 2       | 9    | 8       |
| 03GR           | 03HR | 10              | 22 | 62  | 31             | 17             | 11,5           | 4,0  | 8,7            | 3       | 11   | 10      |
| 04GR           | 04HR | 12              | 25 | 74  | 37             | 21             | 13,5           | 4,0  | 11,0           | 4       | 13,3 | 12      |
| 05GR           | 05HR | 14              | 25 | 74  | 37             | 21             | 13,5           | 4,0  | 13,0           | 5       | 15,3 | 14      |
| 1GR            | 1HR  | 16              | 32 | 86  | 43             | 24             | 14             | 6,35 | 14,8           | 5       | 17,3 | 16      |
| 2GR            | 2HR  | 18              | 36 | 96  | 48             | 28             | 19             | 8,0  | 16,0           | 6       | 19,8 | 18      |
| 3GR            | 3HR  | 20              | 42 | 108 | 54             | 31             | 19             | 8,0  | 18,0           | 6       | 22,8 | 20      |
| 4GR            | 4HR  | 22              | 45 | 120 | 60             | 34             | 20,5           | 10,0 | 20,0           | 6       | 24,8 | 22      |
| 5GR            | 5HR  | 25              | 50 | 132 | 66             | 38             | 20,5           | 10,0 | 23,0           | 8       | 28,3 | 25      |
| 6GR            | 6HR  | 30              | 58 | 166 | 83             | 49             | 25             | 10,0 | 28,0           | 8       | 33,3 | 30      |

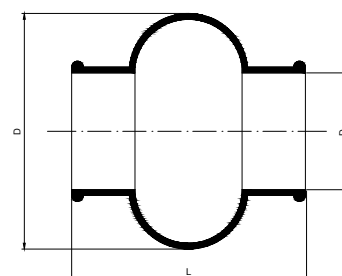


Protections muffs

| Size | Dimensions (mm) |                |     | Suitable for joint with outside diameter |
|------|-----------------|----------------|-----|--|
|      | D               | D <sub>1</sub> | L   |  |
| 01M  | 28              | 15             | 34  | 16                                       |
| 02M  | 32              | 16,5           | 40  | 18                                       |
| 03M  | 40              | 20,5           | 45  | 22                                       |
| 04M  | 48              | 24,5           | 50  | 24/26                                    |
| 05M  | 52              | 27,5           | 56  | 28/29                                    |
| 1M   | 56              | 30,5           | 65  | 32                                       |
| 2M   | 66              | 35,5           | 72  | 36/37                                    |
| 3M   | 75              | 40             | 82  | 42                                       |
| 4M   | 84              | 45             | 95  | 45/47                                    |
| 5M   | 92              | 50             | 108 | 50/52                                    |
| 6M   | 100             | 56             | 122 | 58                                       |

## Specifications

- Neoprene rubber
- Resistant to acids, oils, greases, dust and moisture



# PRODUCT GROUPS



Couplings



Locking Assemblies



Universal Joints



Clutches & Brakes



Brakes



Collars

## Skilled to get your ideas fulfilled

HITEX is a range of power transmission components dedicated to add value to all OEM industrial creations.

HITEX is produced using the latest technology & rich experience of its factories to provide innovative and cost-effective engineered solutions.

Honored to have the opportunity to serve OEM customers worldwide, HITEX provides prompt and reliable deliveries to meet all aftersales requirements.

## Our best technology is human

**European  
Transmission  
Company**

The **Powerful** Solution

European Transmission Company B.V.  
Laan van de Ram 49  
7324 BW Apeldoorn  
The Netherlands  
Tel. +31 (0)881 200 300  
info@europeantransmissioncompany.eu  
www.europeantransmissioncompany.eu

**HITEX**

POWER TRANSMISSION COMPONENTS

Images may differ from reality. All content (logo, text, data, graphics, and images) may not be reproduced, copied, transmitted or manipulated without the prior written permission of the AZ Hollink Group. All content (text, diagrams and pictures) is subject to alteration. We accept no liability.

[www.hitex.nl](http://www.hitex.nl)